

beautifully strong | by design **Integra**[®]

HIGH PERFORMANCE COATED FABRICS

Interactive Card



Reef Upholstered Arm Lounge Seating



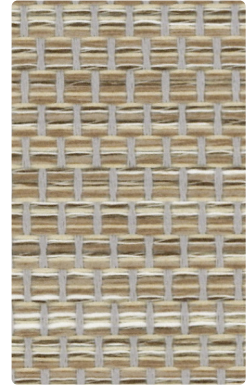
ZEN
ZN-007 Alabaster



ESSENCE
ES-017 Stone



GRAVITY
TL464-007 Bone



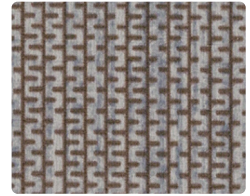
RELATIVITY
TL465-007 Greige



VECTOR
VE-007 Latte



ARCADE
AC-010 Driftwood



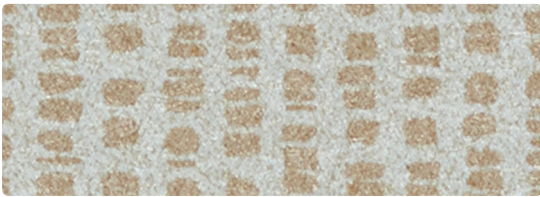
ZIP
ZP-000 Mocha



ZIP
ZP-007 Straw



ARCADE
AC-017 Latte



ZEN
ZN-017 Stone



MOLECULE
MU-007 Oyster



VECTOR
VE-006 Steel



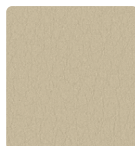
ZIP
ZP-006 Fog



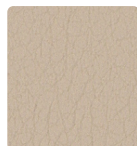
ARCADE
AC-006 Chrome



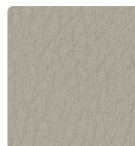
NOBLE
NB-056 Folkstone



NOBLE
NB-007 Buff



NOBLE
NB-037 Beach



NOBLE
NB-036 Dove

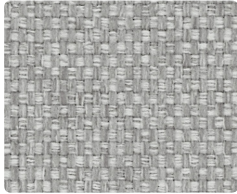


NOBLE
NB-067 Stone

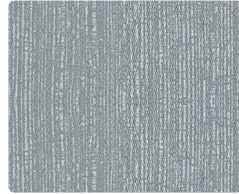


NOBLE
NB-026 Greige

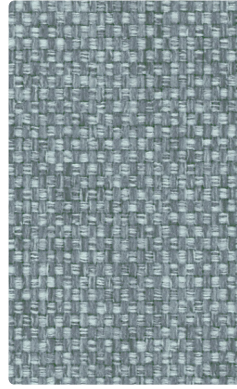
Additional colors are available. Please refer to the Mayer Fabrics website.



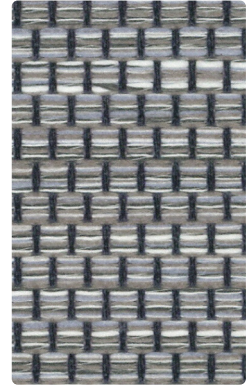
GRAVITY
TL464-016 Fog



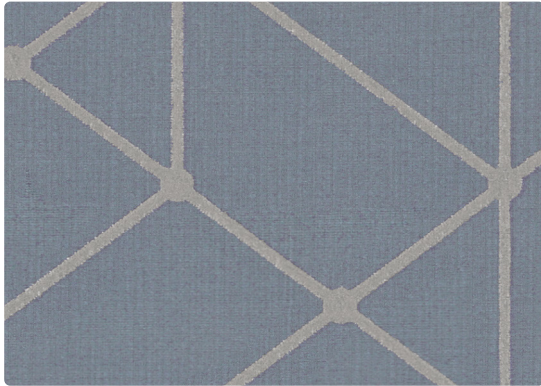
ARCADE
AC-016 Pinball



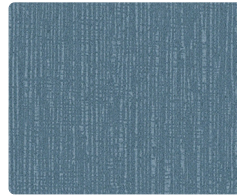
GRAVITY
TL464-004 Spa



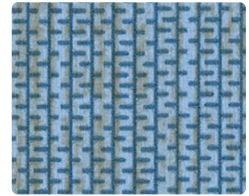
RELATIVITY
TL465-004 Mineral



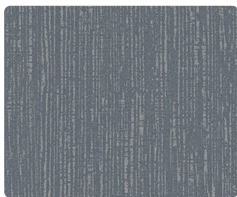
VECTOR
VE-004 Haze



ARCADE
AC-014 Sky



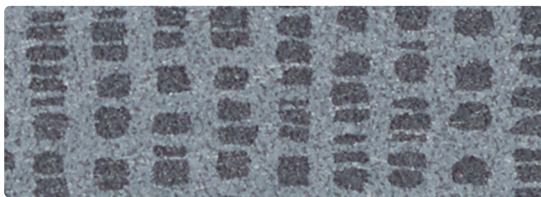
ZIP
ZP-014 Sky



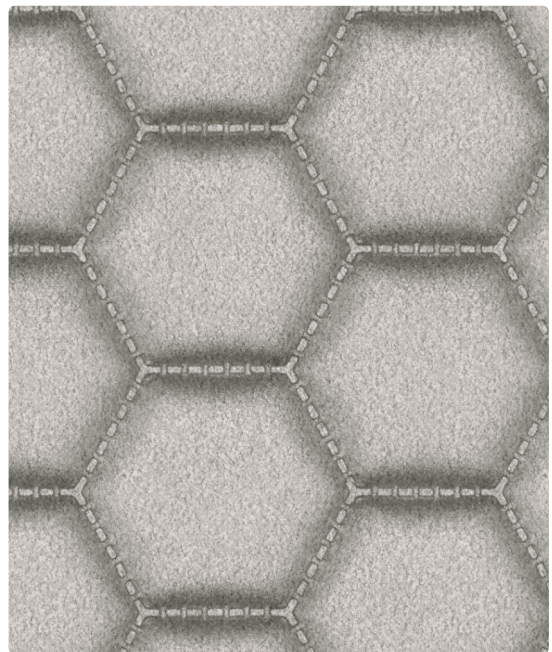
ARCADE
AC-026 Metal



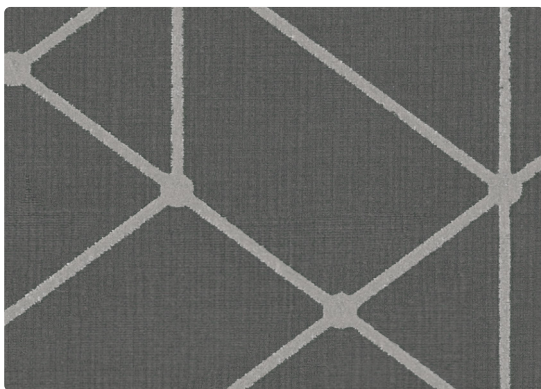
ZIP
ZP-026 Storm



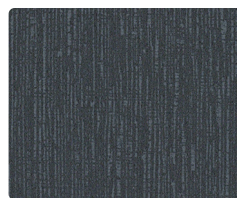
ZEN
ZN-016 Argent



MOLECULE
MU-016 Aluminum



VECTOR
VE-016 Iron



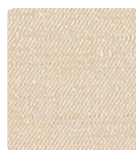
ARCADE
AC-036 Smoke



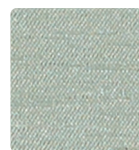
ZIP
ZP-036 Coal



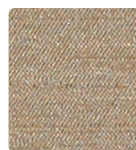
MATKA
MT-017 Mist



MATKA
MT-007 Champagne



MATKA
MT-024 Seafoam



MATKA
MT-020 Burnish

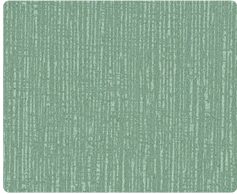


MATKA
MT-036 Titanium

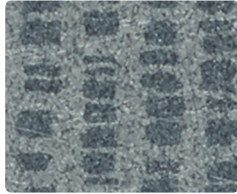


MATKA
MT-016 Shadow

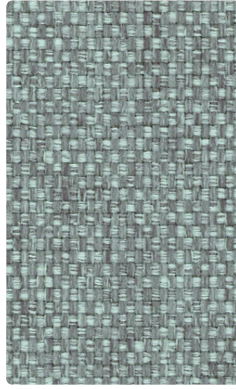
Additional colors are available. Please refer to the Mayer Fabrics website.



ARCADE
AC-033 Menthol



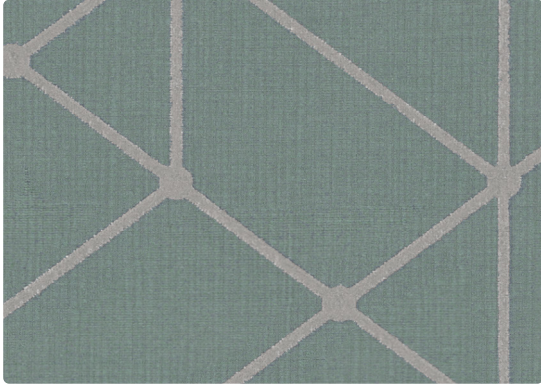
ZEN
ZN-014 Blue Slate



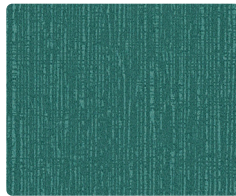
GRAVITY
TL464-003 Pistachio



RELATIVITY
TL465-003 Eucalyptus



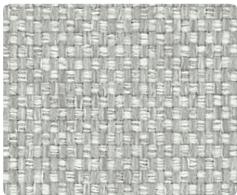
VECTOR
VE-003 Mint



ARCADE
AC-024 Laguna



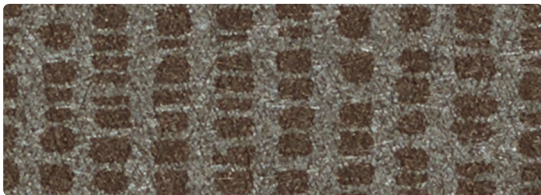
ZIP
ZP-004 Sea



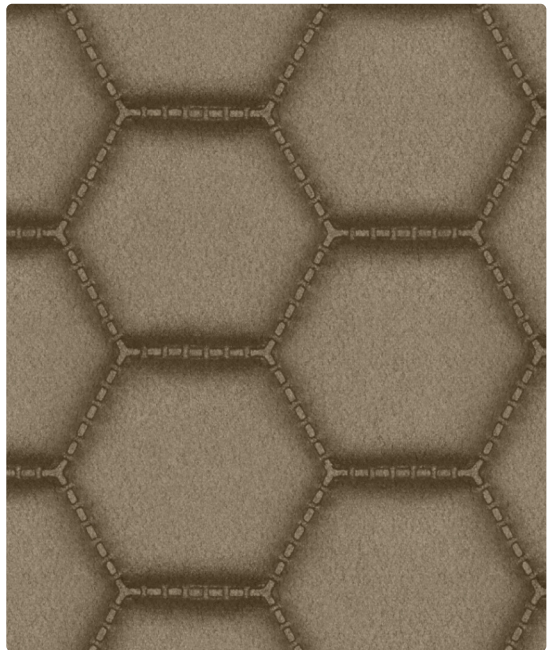
GRAVITY
TL464-013 Lichen



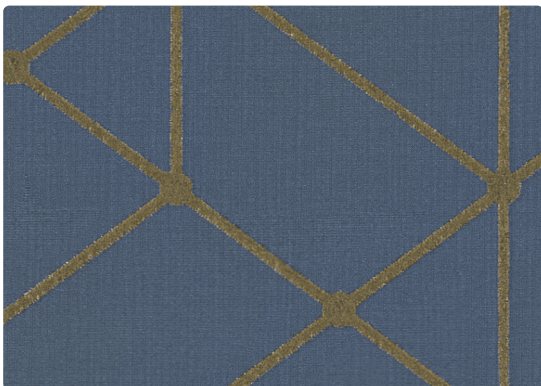
ESSENCE
ES-016 Metal



ZEN
ZN-000 Seal



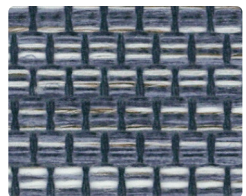
MOLECULE
MU-017 Stone



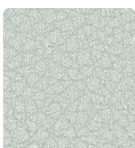
VECTOR
VE-014 Sapphire



ESSENCE
ES-014 Indigo



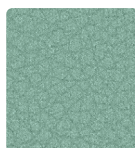
RELATIVITY
TL465-014 Oxford



APOLLO SILICONE
SAP-044 Dew



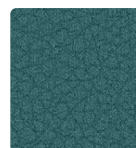
APOLLO SILICONE
SAP-037 Stone



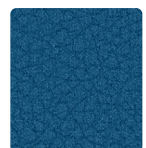
APOLLO SILICONE
SAP-034 Spa



APOLLO SILICONE
SAP-047 Mica

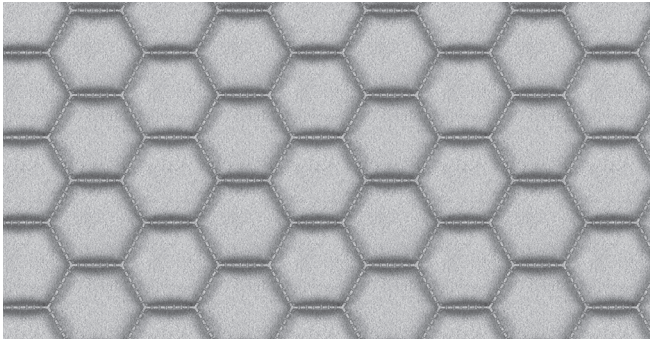


APOLLO SILICONE
SAP-024 Mediterranean

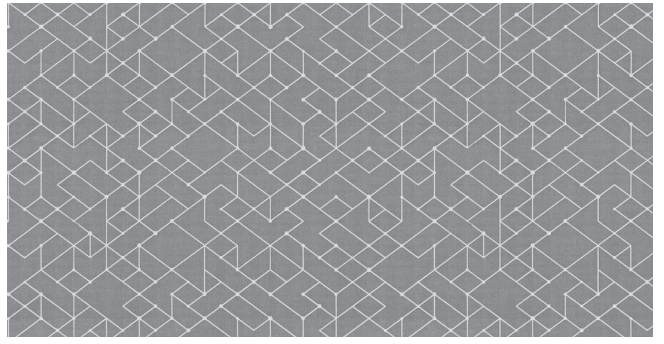


APOLLO SILICONE
SAP-014 Indigo

Additional colors are available. Please refer to the Mayer Fabrics website.



MOLECULE – Repeat: 2.25" H, 1.3" V Random Match
Shown Railroaded



VECTOR – Repeat: 20.25" H, 10.25" V

TECHNICAL INFORMATION

High Performance Coated Fabrics | Interactive Card

Pattern 54"	Content and Backing	Certifications	Weight/ Linear Yd.	Pattern Repeat	Finish	Abrasion Wyzenbeek	Light- Fastness	Flammability	Cleaning Code	Grades
APOLLO SILICONE	45% SiO™ Silicone face, 55% Polyester backing	GREENGUARD	28 oz.	None	None	225,000 ^A Double Rubs	500 hours	Cal. 117-2013 NFPA 260/UFAC Class 1 ASTM E84 (Adhered & Unadhered) Class 2 or B FMVSS 302 IMO 2010 FTP Code, Part 8 BS 5852: 2006 Crib 5	BC, CFC	S
ARCADE <i>Directional</i>	63% Polyurethane Polycarbonate - PVC Free / 2% Silicone face, 35% Polyester backing	GREENGUARD	19 oz.	Non- Matching	WRITE AWAY® - Soil & Stain Resistant Top Coat with Ink Resistant Technology	1,000,000 ^A Double Rubs	300 hours	Cal. 117-2013 NFPA 260/UFAC Class 1	WS, BC, CFC	P
ESSENCE <i>Directional</i>	80% Vinyl - Phthalate Free face, 20% Polyester backing	GREENGUARD	30 oz.	None	Soil & Stain Resistant Top Coat with Ink Re- sistant Technology	250,000 ^A Double Rubs	200 hours	Cal. 117-2013 NFPA 260/UFAC Class 1	WS, BC, CFC	O
GRAVITY	87% Polyester, 13% Graffiti-Free® Tekloom® TPE Backing: Polyester	GREENGUARD Gold	16 oz.	Non- Matching	WRITE AWAY® - Soil & Stain Resistant Top Coat with Ink Resistant Technology	1,000,000 ^A Double Rubs	40 hours	Cal. 117-2013 NFPA 260/UFAC Class 1 IMO A.652(16)8.2	WS, BC, CFC	P
MATKA <i>Directional</i>	80% Vinyl - Phthalate Free face, 20% Polyester backing	GREENGUARD	30 oz.	Non- Matching	Soil & Stain Resistant Top Coat with Ink Resistant Technology	250,000 ^A Double Rubs	500 hours	Cal. 117-2013 NFPA 260/UFAC Class 1	WS, BC, CFC	O
MOLECULE <i>Directional Railroaded</i>	24% Polyurethane Polycarbonate - PVC Free face, 76% Polyester backing	GREENGUARD	27.5 oz.	2.25" H, 1.3" V Random Match	WRITE AWAY® - Soil & Stain Resistant Top Coat with Ink Resistant Technology	100,000 ^A Double Rubs	200 hours	Cal. 117-2013 NFPA 260/UFAC Class 1 IMO A.652(16)8.2	WS, BC, CFC	S
NOBLE	78% Vinyl face, 22% Polyester backing	GREENGUARD	30 oz.	None	Soil & Stain Resistant Top Coat with Ink Resistant Technology	100,000 ^A Double Rubs	300 hours	Cal. 117-2013 NFPA 260/UFAC Class 1 FMVSS 302	BC, CFC	M
RELATIVITY <i>Directional</i>	88% Polyester, 12% Graffiti-Free® Tekloom® TPE Backing: Polyester	GREENGUARD Gold	17 oz.	Non- Matching	WRITE AWAY® - Soil & Stain Resistant Top Coat with Ink Resistant Technology	1,000,000 ^A Double Rubs	40 hours	Cal. 117-2013 NFPA 260/UFAC Class 1 IMO A.652(16)8.2	WS, BC, CFC	R
VECTOR <i>Directional</i>	40% Polyurethane Polycarbonate - PVC Free face, 60% Polyester backing	GREENGUARD	16 oz.	20.25" H, 10.25" V	WRITE AWAY® - Soil & Stain Resistant Top Coat with Ink Resistant Technology	100,000 ^A Double Rubs	200 hours	Cal. 117-2013 NFPA 260/UFAC Class 1 IMO A.652(16)8.2	WS, BC, CFC	R
ZEN <i>Directional</i>	46% Polyurethane Polycarbonate - PVC Free/ 2% Silicone face, 52% Polyester backing	GREENGUARD	18 oz.	10.4" H, 5.3" V Non- Matching	Soil & Stain Resistant Top Coat	100,000 ^A Double Rubs	200 hours	Cal. 117-2013 NFPA 260/UFAC Class 1	BC, CFC	R
ZIP <i>Directional</i>	78% Vinyl - Phthalate Free face, 22% Polyester backing	GREENGUARD	26 oz.	None	Soil & Stain Resistant Top Coat	100,000 ^A Double Rubs	1000 hours	Cal. 117-2013 NFPA 260/UFAC Class 1	BC, CFC	O

REDUCED ENVIRONMENTAL IMPACT

These products are GREENGUARD Certified or GREENGUARD Gold Certified for low chemical and particle emissions to UL standard UL 2818 and may contribute to LEED certification.

CARE AND CLEANING INFORMATION

WS: Water/Solvent Cleaner CFC: Coated Fabrics Cleaning – Refer to Mayer website for complete cleaning info.

BC: Bleach Cleanable – 1 part bleach, 9 parts water = 10% bleach, 90% water solution. **Do not clean/disinfect fabric for longer than 10 minutes using the 10% bleach solution. Always rinse promptly with clean water after applying the bleach solution. Failure to do so will void any and all warranties.**

DYE TRANSFER DISCLAIMER

Certain clothing and accessory dyes (such as those used on denim jeans) may migrate to lighter colors. This phenomenon is increased by humidity and temperature and is irreversible. Mayer Fabrics will not assume responsibility for dye transfer caused by external contaminants. Please check compatibility when using this product in combination with painted or varnished surfaces.

ADDITIONAL INFORMATION

^AAbrasion test results exceeding ACT Performance Guidelines are not an indicator of product lifespan. Multiple factors affect fabric durability and appearance retention.

Warranty: Please refer to the Mayer website for warranty information by pattern.

Custom Colors: All patterns can be custom colored. Minimum yardage applies.

Digital Swatch Card Color Matching: Due to color variations on different monitors and color printers, actual swatch colors may vary slightly. Please request a memo sample from Mayer Fabrics to ensure proper color representation.

Complete and current product information available at mayerfabrics.com.

*Fabric grades are subject to change at any time. Please contact Integra Customer Service at 800.235.0234 x 4 or www.integraseating.com/fabrics to confirm fabric grade.

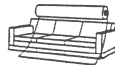
©2022

IHPFCFD MF0322

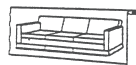


These fabrics meet or exceed these ACT performance guidelines. *Certification Marks owned by ACT*

Railroaded: This feature allows reduction of seams and enables smoother furniture tailoring.



Fabric "up the roll" or "regular" position



Fabric "railroaded" or "top selvage" position

We recommend all railroaded patterns should be upholstered as shown on card.

TexTile3D™

by Mayer Fabrics

For additional colors, pre-approved patterns, grade-ins, samples and specifications, please refer to the Mayer TexTile3D link.