

SPECIFICATION INFORMATION

PLEASE USE THE FOLLOWING SEQUENCE WHEN SPECIFYING A-TABLES and A-BENCHES:

1. ITEM NUMBER: ATB-F-(M/O)4824(EE)18(LL)

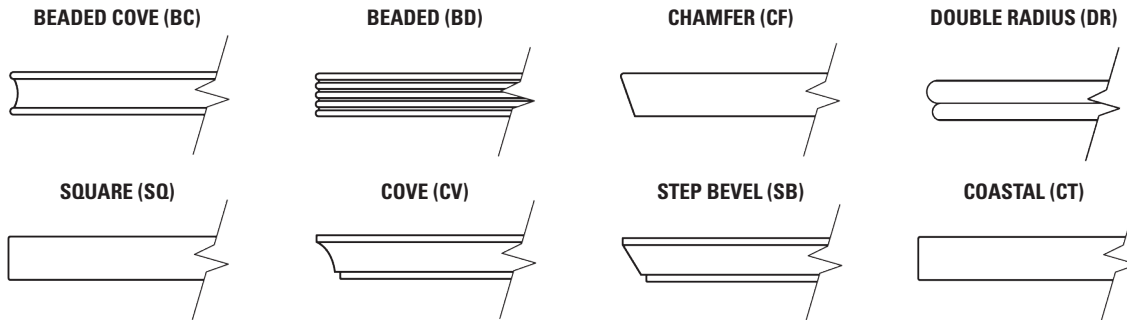
The item number for each table is the combination of its wood species (M=Hard Maple, O=White Oak), top size (48x24) and edge detail (EE) followed by height (18) and leg style (LL).

2. LAMINATE ITEM NUMBER: ATB-F-(M/O)-L-4824(EE)18(LL)

Add L to part #.

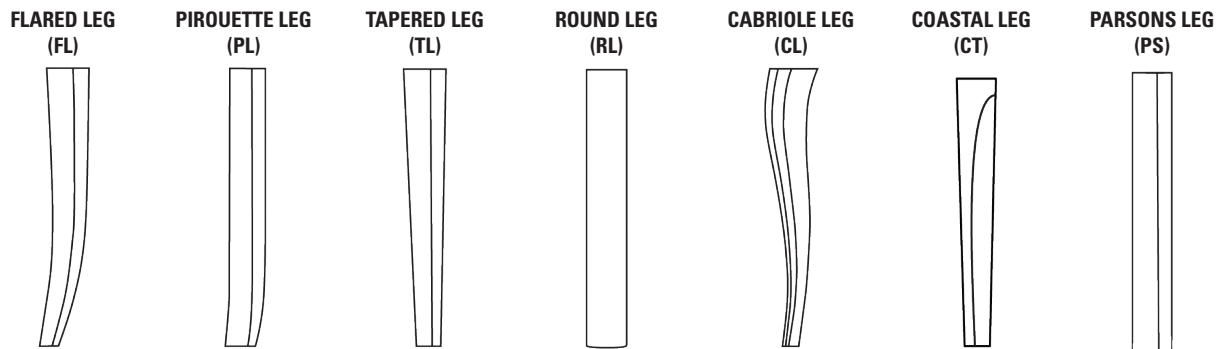
3. EDGE DETAIL OPTION: (EE)

Specify edge detail. The edge option code is two letters corresponding to the following edge details.



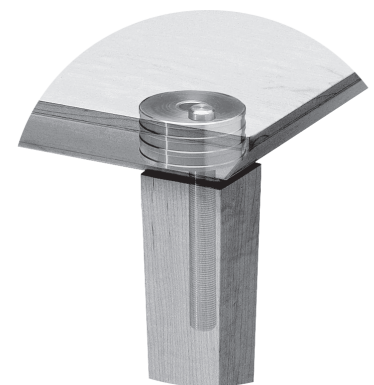
4. LEG STYLE: (LL)

Specify leg style. The leg style code is two letters corresponding to the following leg styles.



AVAILABLE LEG & EDGE COMBINATIONS

	BEADED COVE (BC)	BEADED (BD)	CHAMFER (CF)	SQUARE (SQ)	COVE (CV)	STEP BEVEL (SB)	COASTAL (CT)
FLARED (FL)	✓	✓	✓	✓	✓	✓	✓
PIROUETTE (PL)	✓	✓	✓	✓	✓	✓	✓
TAPERED (TL)	✓	✓	✓	✓	✓	✓	✓
ROUND (RL)	✓	✓	✓	✓	NA	NA	✓
CABRIOLE (CL)	✓	✓	✓	✓	✓	NA	NA
COASTAL (CT)	✓	✓	✓	✓	NA	NA	✓
PARSONS (PS)	✓	✓	✓	✓	✓	✓	✓



Our A-Tables and A-Benches are built just as solidly as the rest of our products featuring our innovatively engineered and ultra-strong steel CAM & PIN connection. The CAM & PIN is epoxied to the top and leg creating a beautiful and clean design guaranteed to hold up.

EXAMPLE:

ATB-F	-	M	4824	CV	18	CL
SERIES		WOOD SPECIES	LAMINATE	TOP SIZE	EDGE DETAIL	HEIGHT
ATB-F	-	M	-L-4824	CV	18	CL

NOTES: 1 3/4" Thick Tops with Steel CAM & PIN Leg Connection

All A-Tables have choice of wood veneer or laminate onlay tops. All A-Tables have solid wood legs and 1 5/8" solid wood edges. Please specify wood finish.

**Solid Surface, Glass and other table top surface options available; contact Customer Service for options and pricing.**