

**Elite Settee**  
The Lounge Collection



Item: **EL-2**

Dimensions:

w: 57	sw: 48
d: 30.5	sd: 21
h: 32	sh: 18.5
	bh: 16

Weight: 149 lbs.

COM: 8.5 yards

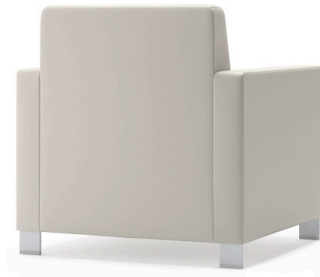
(if large repeat, contact customer service)

**Options:**

- Tablet Arm (300 lb capacity)
- Cup Holder (must be used with Tablet)
- Wood Arm Caps (Hard Maple)
- 3D Laminated Arm Caps (Solid or Woodgrain)
- Power Port (2-plug/2-USB, 10' plug-in cord)
- Bar Legs (Solid Steel w/Brushed Chrome finish)
- Brushed Aluminum Nave Leg
- Elite Triangular Wood Legs
- Wood Legs with Dome Glides
- Recessed Pull Handle
- Perma-Coat Wood Leg Protector
- Weighted
- Tamper-Resistant Fasteners
- Combination Fabrics
- Custom Finishes
- Moisture Barrier
- TB133 (Fire Barrier)

**Features:**

- Lifetime Warranty
- Chairs Pass 1200 lb Drop Test (2000 lb Capacity)
- Replaceable & Recoverable Components
- Hard Maple
- Steel Inner Construction
- Dymetrol Suspension
- Blanket-wrapped shipping (no cardboard waste)



Back View (Bar Legs shown)



Tablet Arm with Cup Holder (300+ lb Capacity)  
(Casters shown - Avail. on Chairs ONLY)



Wood & 3DL Arm Caps  
(Triangular Wood Legs shown)



Power Port Option with Plug-in Cord  
(Brushed Aluminum Nave Legs shown)

**Power Port Options**



**Leg Options**



Bar Legs

Alum. Nave Legs

Triangular Wood Legs

Wood Legs with Dome Glides  
(makes movement easier)

Recessed Pull Handle

**Coordinating Products:**  
Chair, Sofa, Ottomans, Table Collections

