

Coastal A-Tables - Square & Rectangular

Coastal Collection



COASTAL
COLLECTION



Item: **ATB-F-xxxxCT-xxCT**

Dimensions:

Tops: 18x18, 21x21, 24x24,
30x30, 36x36, 42x42,
48x48, 48x24 or 54x18

h: 18, 21, 24 or 29

Weight: Various

Options:

Veneer or Laminate Tops
Laminate Onlay (over Solid Wood Edge)
1/2" Solid Surface Top (epoxied on)
3/4" Glass Top (set-on-top)
Perma-Coat Wood Leg Protector
Custom Finishes

Features:

Lifetime Warranty
1 3/4" Thick Solid Core Top
1 5/8" Solid Wood Edge
Steel Cam-&Pin Top to Leg Connection
Hard Maple
Freestanding & Systems
Blanket-wrapped shipping (no cardboard waste)

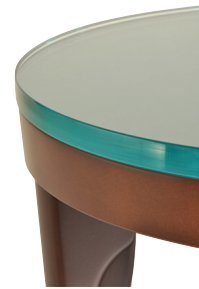
Top Options



Veneer or Laminate Onlay
(over Solid Wood Top)



1/2" Solid Surface
(epoxied on)



3/4" Glass (set-on-top)



Laminate Onlay (over Solid Wood Edge)

Leg & Edge Detail



Coastal Edge



Coastal Leg



Perma-Coat
Wood Leg
Protector



Systems (End Table shown)



Steel Cam-&Pin
Top to Leg Connection

Coordinating Products:

Tide Seating, Marina Seating, Bay Seating, Reef Seating, Marina/Bay Ottoman,
Coastal Benches



800.235.0234

integraseating.com

v.1