

Tria Corner Table

Tria Collection



Item: TCT-F or TCT-F-L

Dimensions:
w: 32
d: 32
h: 18

(Allow 35" for 90° corner)

Weight: --

Options:

- Wood Legs
- 1/2" Solid Surface Top (epoxied on)
- 3/4" Glass Top (set-on-top)
- Power Port (2-plug/2-USB, 10'plug-in cord)
- Perma-Coat Wood Leg Protector
- Custom Finishes

Features:

- Lifetime Warranty
- Veneer or Laminate Tops
- Hard Maple
- Freestanding and Systems
- Blanket-wrapped shipping (no cardboard waste)

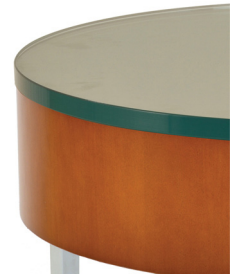
Top Options



Veneer or Laminate



1/2" Solid Surface (epoxied on)



3/4" Glass (set-on-top)

Note: A self-edge will be used on tables with laminate, solid surface or glass tops.



Freestanding (Half Table shown)



Systems

Leg Options



Wood Legs



Perma-Coat Wood Leg Protector

Power Port Options



All Black



All White



Silver/White

Coordinating Products:

Tria Rolled Arm, Tria Upholstered Arm, Tria Upholstered Arm with Caps, Tria Square Arm, Tria Ottomans, Tria Systems

