

**OTTOMAN | 45° WEDGE**  
COFFEE HOUSE COLLECTION



coffeehouse  
collection

**COT45**

W	D	H	YDG*	WT
45	30	17.5	3.5 (Upholstered) 3 (With Top)	53

\*If large repeat, contact customer service

**FEATURES**

- Component-based Construction: Replaceable & Recoverable Components
- 1000 lb Dynamic & 2000 lb Static Capacities
- Freestanding and Systems
- Certified Clean Air Gold
- Lifetime Warranty (includes 24/7 facilities)

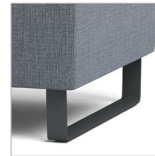
**BASE/LEG OPTIONS**



Brushed Aluminum Leg



Wood Leg



Sled Base

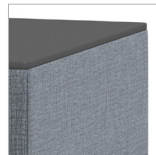


5" Heavy Duty Caster

**OPTIONS**

- Multiple base/leg options
- Tops available in multiple materials
- Power Port in 3 color options with 10' Plug-in Cord
- Combination Fabrics
- Custom Finishes
- Moisture Barrier
- TB133 (Fire Barrier)
- Tamper-Resistant Fasteners
- Perma-Coat Wood Leg Protector
- Weighted

**TOP OPTIONS**



Solid Surface Top



Laminate/Plywood Edge Top